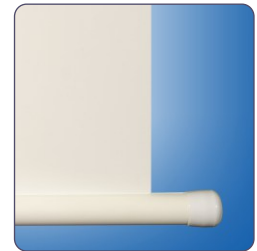




Maxxscreen 15



robust case



slat bar retracts into the case



rotary switch

Highlights

- Large venue electric screen for trade shows, conference halls, theaters and cinemas
- Up to size of 400 cm width and 300 cm height, seamless
- High-quality, stable square 15x15 cm steel housing 1 mm steel sheet, white colour RAL9010
- Ceiling installation as standard
- Maintenance - free robust motor incl. thermo protection against overheating
- Easy and safe handling due to an electrical drive, rotary switch included
- Automatic electrical end switch at the top and bottom

Optional

- Customized sizes, special colour of casing, different types of screens surfaces on request
- RF remote control
- Installation frame for integration into suspended ceilings
- Mounts for wall mounting

Screen surface

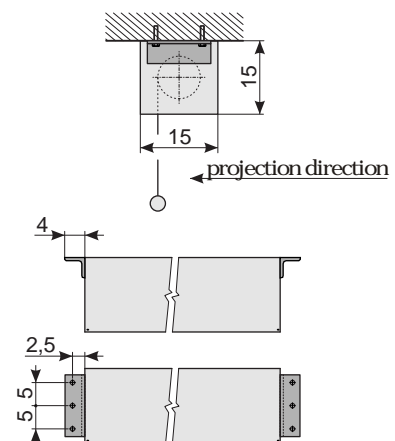
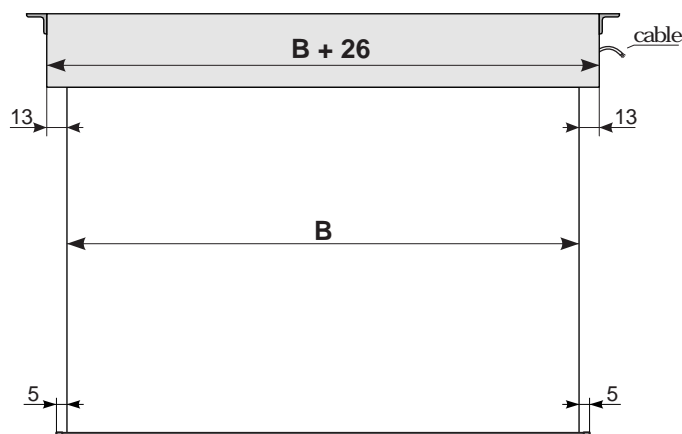
- Type D - matt white, Gain 1,1, fabric based material

The product is in conformity with the following EU-Standards and other Normative Documents

EG-Machine Directives 89/392/EWG
EMV-Directive 89/336/EWG
Low-voltage Directive 73/23/EWG

Applied norms and technical specifications:

DIN EN 292 Part 1+2
DIN EN 294
DIN EN 349
DIN 19045
DIN EN 55014 Part 1+2
DIN EN 61000-3-2
DIN EN 60335 Part 1
DIN ETS 300220
DIN ETS 300683
DIN ETS 60730



Dimensions in cm

B	350	400
----------	-----	-----