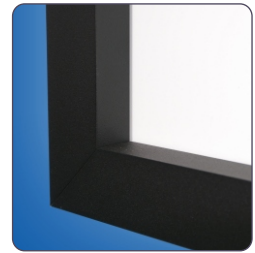


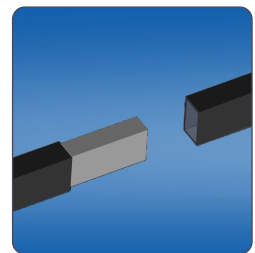
Wall Frame Pro



attractive matt black aluminium frame



rear view: screen surface tensioned with press buttons



simple assembly with easy connector system

Highlights

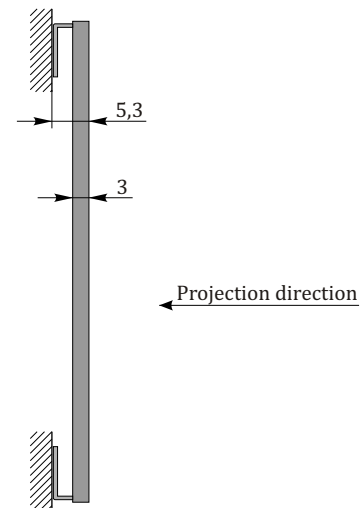
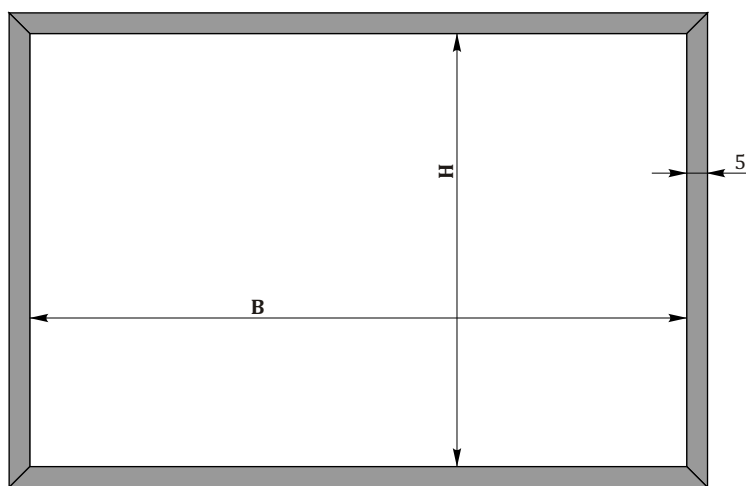
- **Guaranteed great flatness of the screen surface for high- quality image reproduction**
- Screen surface is tensioned in the rear side with press buttons
- Attractive, high quality aluminium frame in black (approx. 5 cm wide / 3 cm deep)
- **The matt black frame provides high-contrast projections, RAL 9005**
- **Easy assembly of the frame with an easy connector system**
- Wall or ceiling mounting
- **Customized sizes, special colour of frame, different types of screens surfaces on request**

Screen Surface

- Type D – matt white, PVC based material
- Format 4:3, 16:9, 16:10

On request

- Perforated screen surface
- Type S – highly reflective, PVC based material pearl coated
- **Type 3D – PVC based material with aluminium silver coating for passive 3D technologies using polarized light**
- Rear projection



Dimensions in cm

BxH	4:3	160x120	180x135	200x150	240x180	300x225	360x270	400x300
	16:9	-	-	200x112.5	240x135	300x169	360x202,5	400x225
	16:10	-	-	200x125	240x150	300x188	360x225	400x250