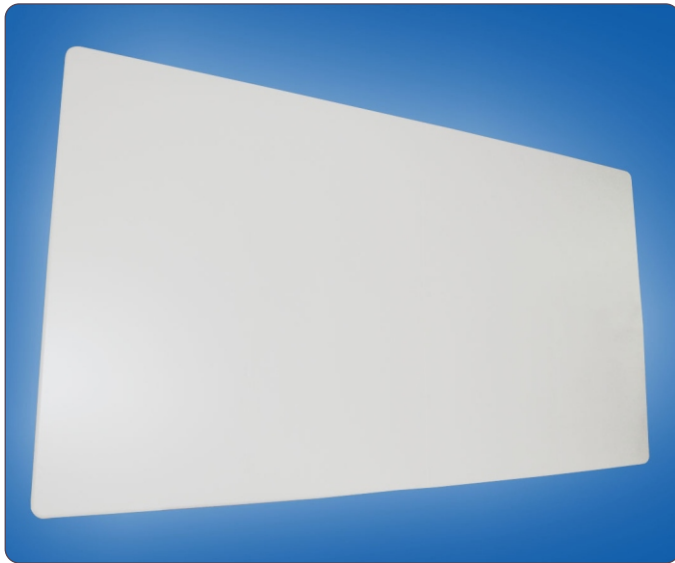


# Double Frame FS



## Highlights:

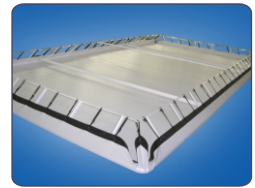
- **Frame screen without visible frame**
- Perfectly tensioned, flat projection surface
- With a distance to the wall of 32 cm, the screen surface appears to be free floating
- **Optimal for use with a sound installation, there is place behind the screen surface for speakers (perforated screen surfaces available on request)**
- **Screen surface (with reinforced edge and eyes) is tensioned with rubber tensioning elements on the inner profile tube**
- Steel profile double tube frame, in white colour
- High stability with centre strut
- Ceiling or wall holder on request
- **Customized sizes, special colour of frame, different types of screens surfaces on request**

## Screen Surface

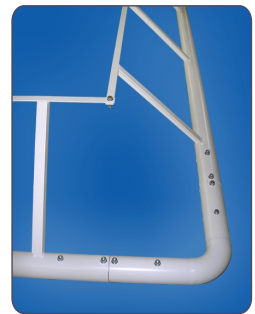
- Type D – matt white, PVC based material
- Format 4:3, 16:9, 16:10

## On request

- Perforated screen surface
- Type S – highly reflective, PVC based material pearl coated
- **Type 3D – PVC based material with aluminium silver coating for passive 3D technologies using polarized light**



rear view:  
tensioned screen surface



substructure:  
double steel profile tube frame



rubber tensioning elements  
for the fastening of the screen  
surface

